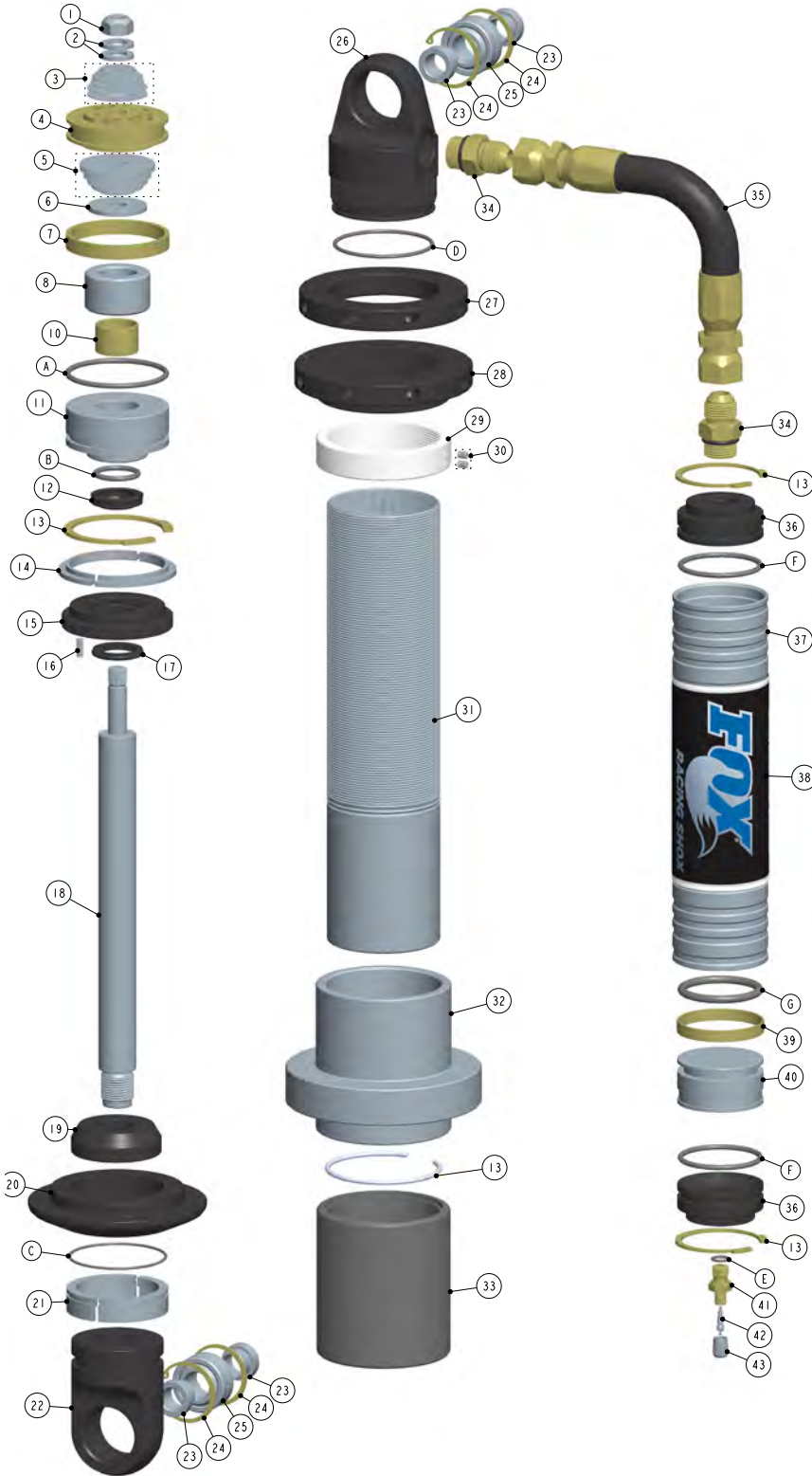


# 2.5 / 3.0 REMOTE RESERVOIR SHOCK EXPLODED VIEW DIAGRAM



## PARTS

| #  | DESCRIPTION              | #  | DESCRIPTION                     |
|----|--------------------------|----|---------------------------------|
| 1  | Piston Lock Nut          | 36 | Reservoir End Cap               |
| 2  | Back-Up Washer           | 37 | Reservoir                       |
| 3  | Rebound Valve Stack      | 38 | Reservoir Decal                 |
| 4  | Damping Piston           | 39 | IFP Wear Band                   |
| 5  | Compression Valve Stack  | 40 | IFP                             |
| 6  | Top-Out Washer           | 41 | Air Valve Housing               |
| 7  | Damping Piston Wear Band | 42 | Air Valve Core                  |
| 8  | Shaft Spacer             | 43 | Air Valve Cap                   |
| 9  | Top-Out Bumper           | 44 | Piggy Back Bridge               |
| 10 | Internal Bearing         | 45 | Piggy Back Lock Ring            |
| 11 | Bearing Housing          | 46 | Piggy Back Bridge Bolt          |
| 12 | Bearing U-Cup Seal       | 47 | Air Shock Spring                |
| 13 | Retaining Ring           | 48 | Spring Retainer Adapter         |
| 14 | Spring Guide Retainer    | 49 | Bump Stop Pad Nut               |
| 15 | Bearing Cap              | 50 | Bump Stop Pad Bolt              |
| 16 | Bearing Set Screw        | 51 | Bump Stop Pad                   |
| 17 | Bearing Cap Wiper Seal   | 52 | Bypass Reservoir Tube           |
| 18 | Shaft                    | 53 | Bypass Reservoir Fitting        |
| 19 | Bottom-Out Bumper        | 54 | Bypass Tube                     |
| 20 | Spring Retainer          | 55 | Bypass Piston                   |
| 21 | Spring Retainer Clip     | 56 | Bypass Spring                   |
| 22 | Eyelet                   | 57 | Bypass Plunger                  |
| 23 | Eyelet Spacer/Reducer    | 58 | Bypass End Cap                  |
| 24 | Eyelet Retaining Ring    | 59 | Adjustment Screw                |
| 25 | Spherical Bearing        | 60 | Adjustment Screw Lock Nut       |
| 26 | Body Cap                 | 61 | Reducer Bushing                 |
| 27 | Preload Back-Up Ring     | 62 | Internal Body                   |
| 28 | Preload Ring             | 63 | Internal Bypass Valve Stack Nut |
| 29 | Crossover Ring           | 64 | Internal Bypass Valve Stack     |
| 30 | Crossover Ring Set Screw |    |                                 |
| 31 | Body                     |    |                                 |
| 32 | Spring Divider           |    |                                 |
| 33 | Spring Guide             |    |                                 |
| 34 | Reservoir Hose Adapter   |    |                                 |
| 35 | Remote Reservoir Hose    |    |                                 |

## O-RINGS

| # | DESCRIPTION                    |
|---|--------------------------------|
| A | Bearing Housing                |
| B | Shaft Bearing                  |
| C | Spring Retainer                |
| D | Body Cap                       |
| E | Air Valve Housing              |
| F | Reservoir End Cap              |
| G | IFP                            |
| H | Piggy Back Bridge              |
| I | Piggy Back Bridge Port         |
| J | ∅ 1.25 Shaft Bottom-Out Bumper |