

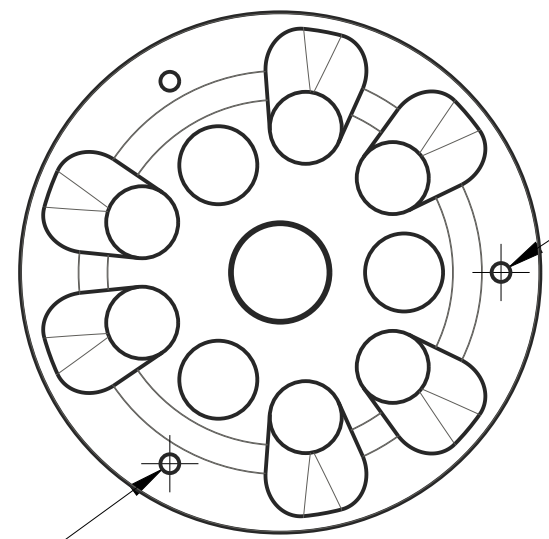
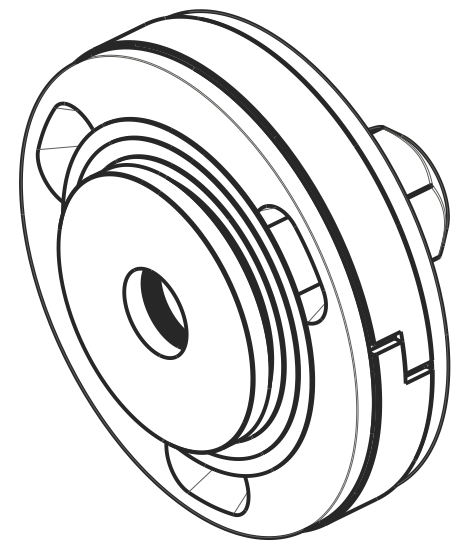
4

3

2

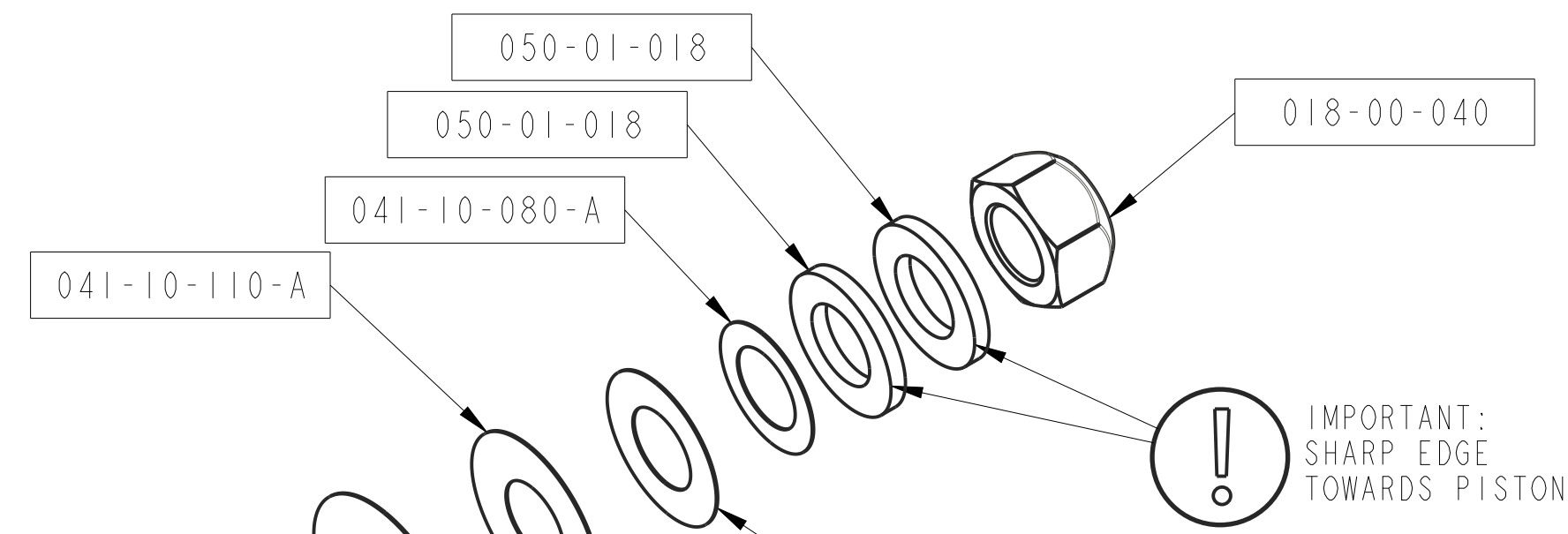
1

REVISIONS				
ZONE	REV	DESCRIPTION	DATE	APPROVED
	A	RELEASE TO PRODUCTION	10/11/17	CR

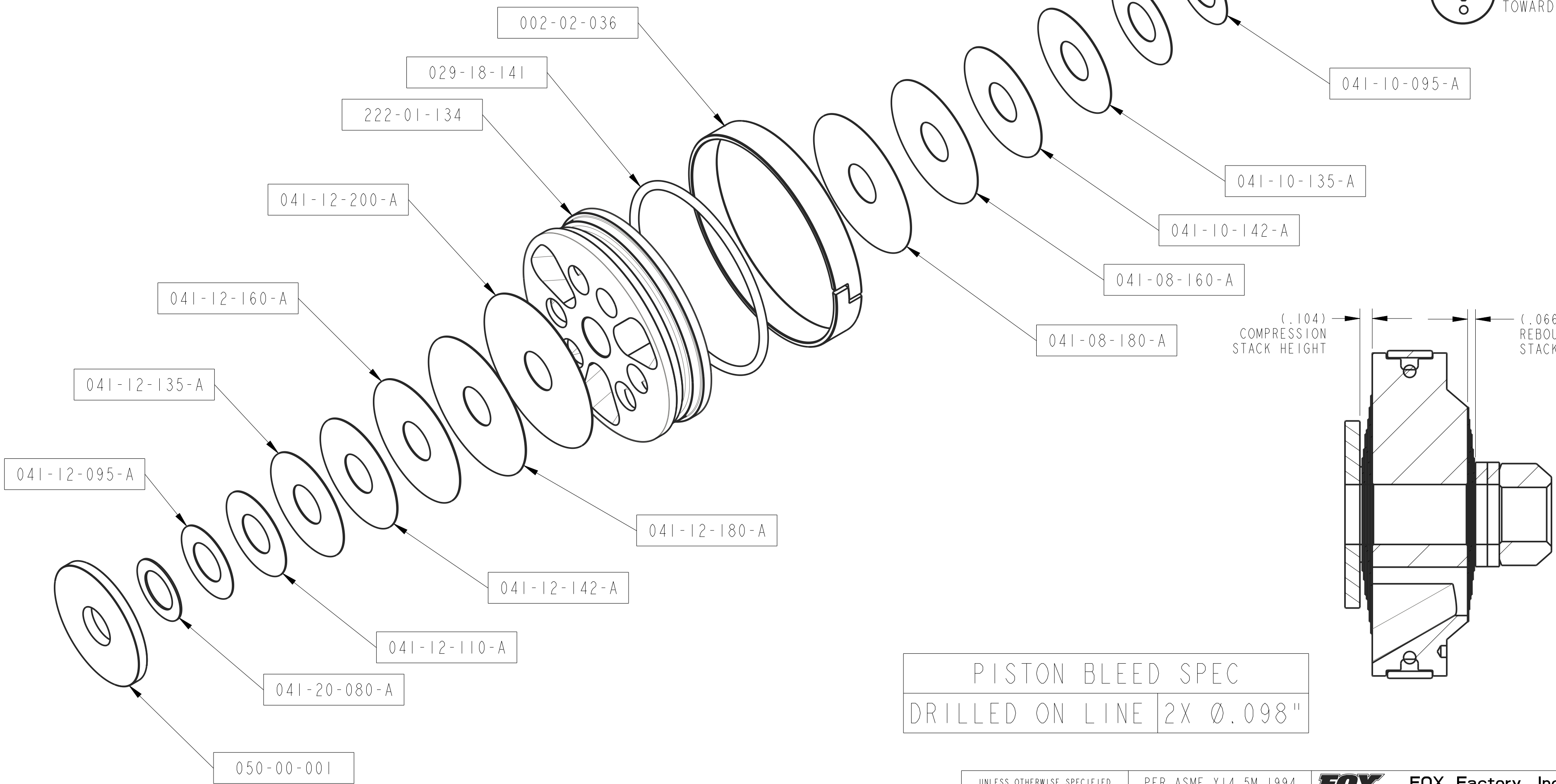


1X Ø.098 BLEED

1X Ø.098 BLEED



! IMPORTANT:
SHARP EDGE
TOWARDS PISTON



(.104)
COMPRESSION
STACK HEIGHT

(.066)
REBOUND
STACK HEIGHT

PISTON BLEED SPEC
DRILLED ON LINE 2X Ø.098"

- NOTES:
1. REFERENCE: 70/40 (2X .098 BLEED)
 2. FIRST APPLICATION: 3.0 SERIES COIL-OVER

- PROPRIETARY -
THIS DOCUMENT CONTAINS CONFIDENTIAL, PROPRIETARY INFORMATION
THAT IS FOX PROPERTY. DO NOT DISCLOSE TO OR DUPLICATE
FOR OTHERS EXCEPT AS AUTHORIZED BY FOX.

UNLESS OTHERWISE SPECIFIED DIMENSIONS ARE IN: INCHES [MM]		PER ASME Y14.5M 1994		FOX Factory, Inc. 130 Hangar Way, Watsonville, CA 95076 USA Ph 831-768-1100 Fax 831-768-9312	
TOLERANCES ARE:		APPROVALS		DATE	
DECIMALS	ANGLES	DWN. BY	C RAHDEERS	10/11/17	
.XX [.X] ± .01 [0,25]	± 1°	CHK. BY			
.XXX [.XX] ± .005 [0,13]		ENG.	C RAHDEERS	10/11/17	
THIRD ANGLE PROJECTION		MFG.		SIZE DWG. NO.	
		ADD.		C 807-24-601	
DO NOT SCALE DRAWING				PLOT SCALE .50:1	
				SHEET 1 OF 2	

4

3

2

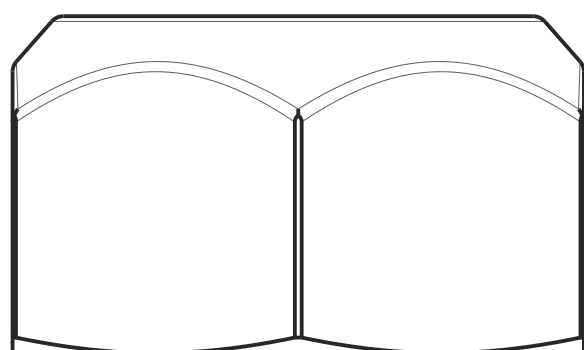
1

4

3

2

1



(2X) BACK UP WASHER



0.800 X .010



0.950 X .010



1.100 X .010



1.350 X .010



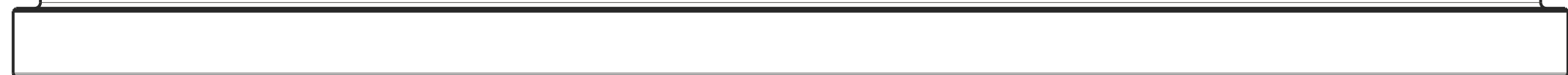
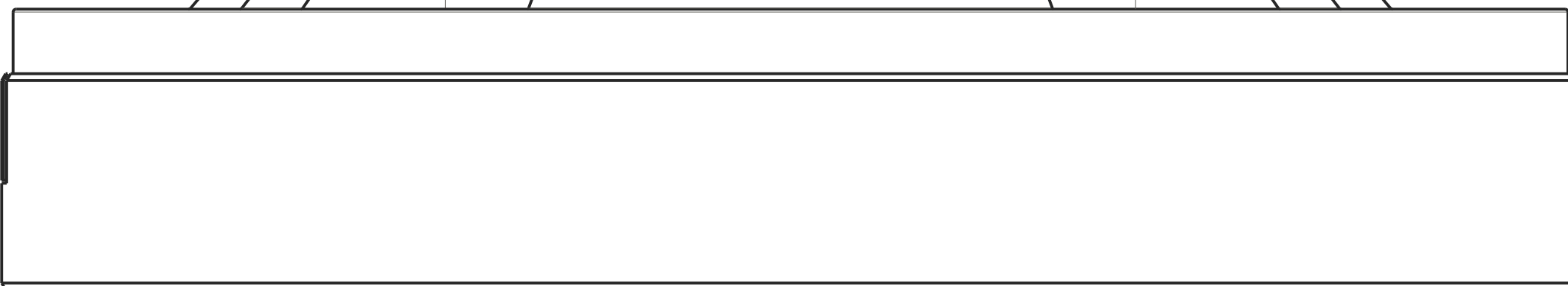
1.425 X .010



1.600 X .008



1.800 X .008



2.000 X .012



1.800 X .012



1.600 X .012



1.425 X .012



1.350 X .012



1.100 X .012



0.950 X .012



0.800 X .020



TOP OUT WASHER

4

3

2

1

- PROPRIETARY -
 THIS DOCUMENT CONTAINS CONFIDENTIAL, PROPRIETARY INFORMATION
 THAT IS FOX PROPERTY. DO NOT DISCLOSE TO OR DUPLICATE
 FOR OTHERS EXCEPT AS AUTHORIZED BY FOX.

SIZE C	DWG. NO. 807-24-601	REV. A
PLOT SCALE 1.50:1 SHEET		2 OF 2